



# High voltage reed relays form A contact – normally open

Wroclaw Division of PIT-RADWAR S.A. has produced:

- high voltage reed relays form A contact (normally open)
- high voltage reed relays form B contact (normally closed)

## High voltage reed relays form A contact (normally open)

High voltage reed relays are assigned to switch and separation high voltage circuits from 5kV to 19kV.

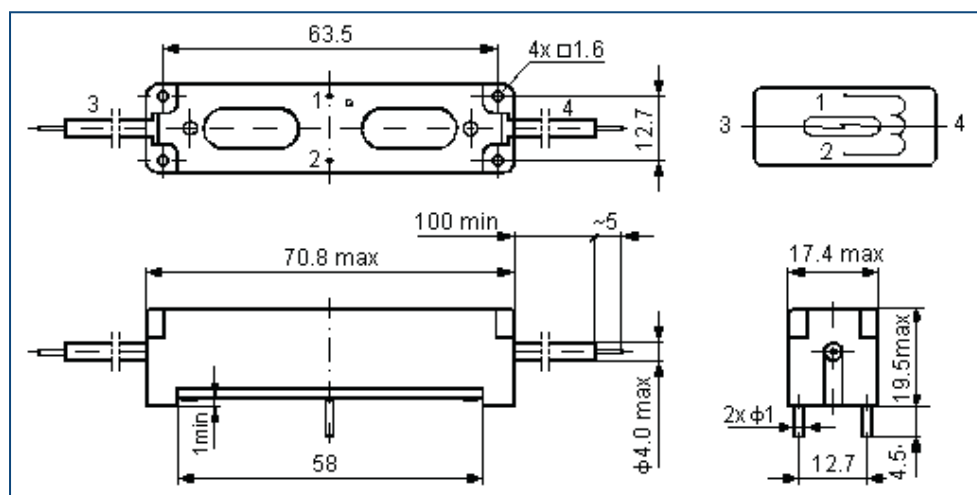
There are produced 3 type of relays:

- **type K-55xH and K56S** – leads of reed switches are performed by elastic HV cables, leads of coil are adapted to PCB mounting
- **type K-56xH and type R56x** – all leads of relay are adapted to PCB mounting

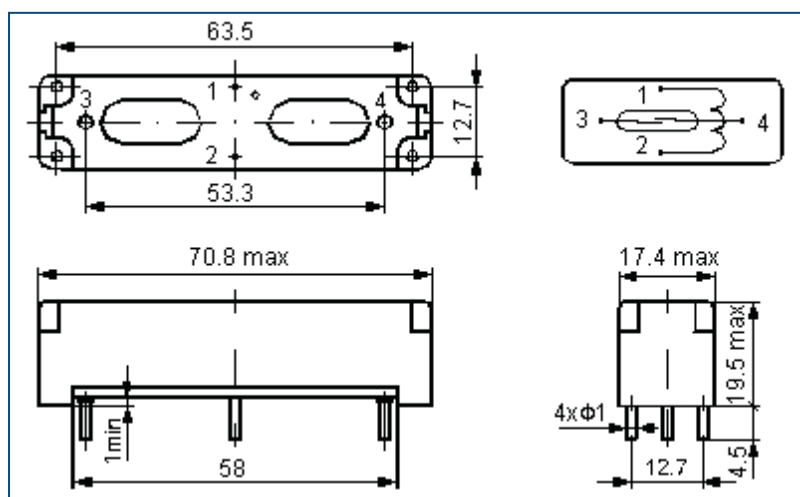
## Technical parameter specification of high voltage reed relays type K-55xH, K-56xH, R-56x, K56S

Technical data		Unit	Type of reed relay					
			K-551H K-561H R-561	K-552H K-562H R-562	K-553H	K-554H	K-555H	K-556S
Contact form			normally open (type A)					
Switching power	max	W	50			10		
Breakdown voltage	min	kV <sub>DC</sub>	7	10	14	17	18	19
Switching voltage	max	kV	5	7.5	10	12		
Switching current	max	A	2		1			
Contact resistance	max	mΩ	150					
Coil normal working voltage		V <sub>DC</sub>	5/6/12/24					24
Pull-in voltage	max	V <sub>DC</sub>	4/4.5/9/18					18
Drop-out voltage	min	V <sub>DC</sub>	0.5/0.6/1/2					2
Nominal coil resistance		Ω	45/45/180/650					400
Operate time including bounces	max	ms	3.6					
Release time	max	ms	0.5					
Breakdown voltage coil-contact	min	kV <sub>DC</sub>	15		30			

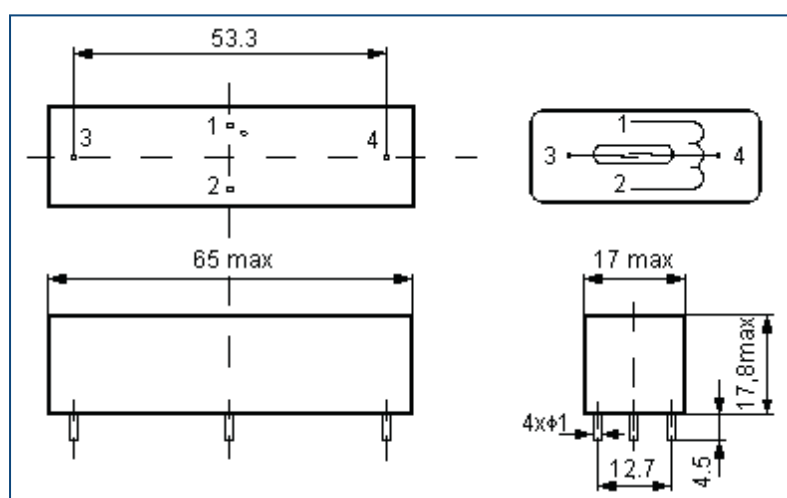
Dimensions and terminal arrangements (all dimension in mm)



K-55xH, K56S



K-56xH



R-56x