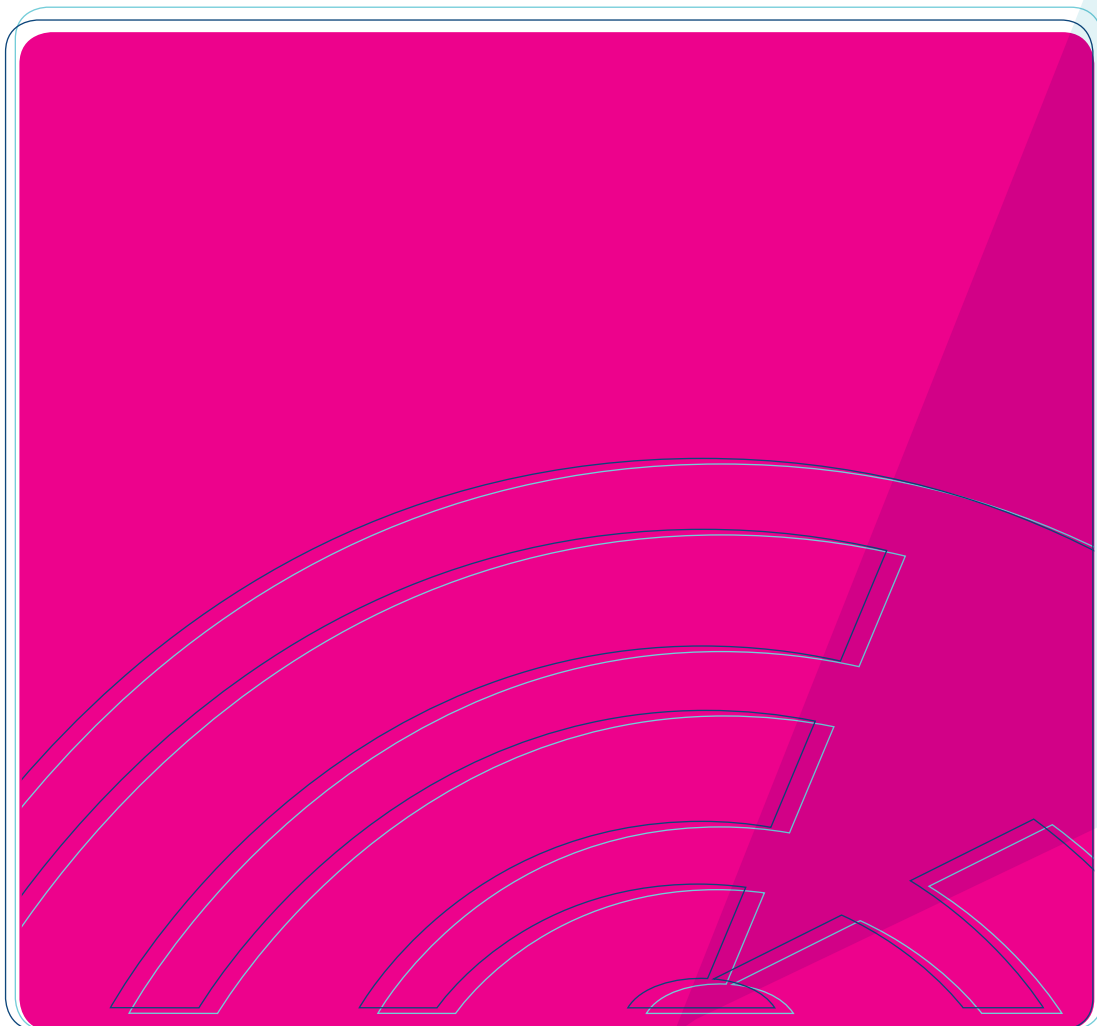




Reed sensors series MS

Wroclaw Division of PIT-RADWAR S.A. produces three groups of reed sensors:

- reed sensors **types MS01, MS02, MS03**
- reed sensors **series DH i MSR**
- triac switch 230V-100W



Reed sensors types MS01, MS02, MS03

Reed sensors types **MS01, MS02, MS03** are designed for PCB mounting. Sensors are operated by permanent magnets, size and parameters of magnets depend on user's applications.

Pull-in Ampere Turns (sensitivity) is measured before modification in standard coil.

Technical parameter specification of reed sensors types MS01, MS02, MS03

Technical data		Unit	Type			
			MS01-01	MS01-02	MS01-03	MS01-04
			MS02-01	MS02-02	MS02-03	MS02-04
			MS03-01	MS03-02	MS03-03	MS03-04
Contact form			normally open (type A)			
Pull-in Ampere turns		Az	9÷12	10÷15	15÷20	20÷25
Switching power	max	W,VA	10		10	
Switching voltage	max	V _{DC,AC}	50		150	
Switching current	max	A	0.5		0.5	
Carry current	max	A	1		1	
Contact resistance	max	mΩ	150		150	
Breakdown voltage	min	V _{DC}	100		200	
Operate time including bounce time	max	ms	1		1	
Release time	max	ms	0.1		0.1	

Dimension of reed sensors types MS01, MS02, MS03 (all dimension in mm)

